

HISTORIC PRESERVATION COMMISSION

Certificate of Appropriateness Application

Agenda Item: 2

April 10, 2014



Description of Project: Consider a Certificate of Appropriateness for outdoor displays, including merchandise and signage, along sidewalks on the historic square.

Location: Granbury Courthouse Square

Property Designations/Overlays: Historic Preservation Overlay (HPO), National Register District, CBD Zoning

C. of A. Description: City staff requests approval of a Certificate of Appropriateness to allow for a specified outdoor display area along the storefronts fronting the Courthouse Square. The C. of A. requirements were previously approved at the March 8, 2012 HPC Meeting.



The requested C. of A. requirements are as follows:

1. A 5'6" clear pedestrian pathway shall be provided along the storefront. The path must remain continuous and may not meander through the width of the storefront (refer to attached exhibit – next page).
2. The pedestrian pathway may be reduced to 5' to allow for a pot or bench only when there is no merchandise display present along the storefront.
3. All merchandise display shall be located between the pedestrian pathway and the storefront. Merchandise display shall not be located between the pedestrian pathway and the street.
4. An 18" clear space shall be provided adjacent to any parallel parking. The area will be measured from the edge of the curb inward toward the storefront.
5. Sandwich Board Signs are permitted within the merchandise display area and are subject to requirements 1-4 above. Additionally, permitted sandwich board signs will meet the following criteria:
 - a. **Sign Material:** Any material. Painted sign frames must be painted with color from historic color palette.
 - b. **Size:** 4' maximum height.
 - c. **Maximum advertising area:** 6 sq. ft.
 - d. **Font Color:** Any font color is acceptable.
 - e. **Lighting:** Flashing lights or illumination of any kind is prohibited.
 - f. **Maximum number of sandwich board signs:** 1 sandwich board per storefront is allowed within the merchandise display area.

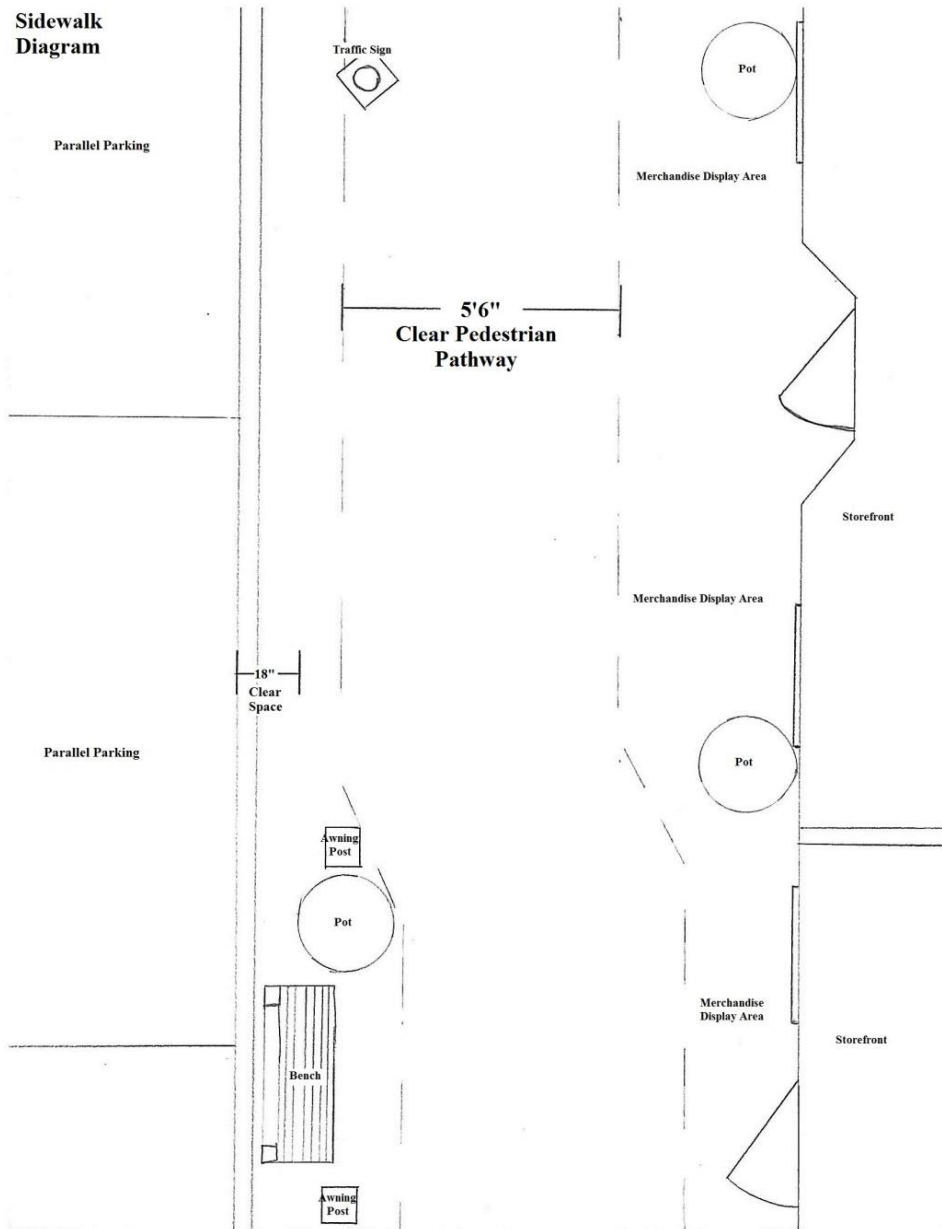
6. The Certificate of Appropriateness shall be issued for one (1) year. The Certificate of Appropriateness will be considered for renewal at the first meeting in January of each year by the Historic Preservation Commission.

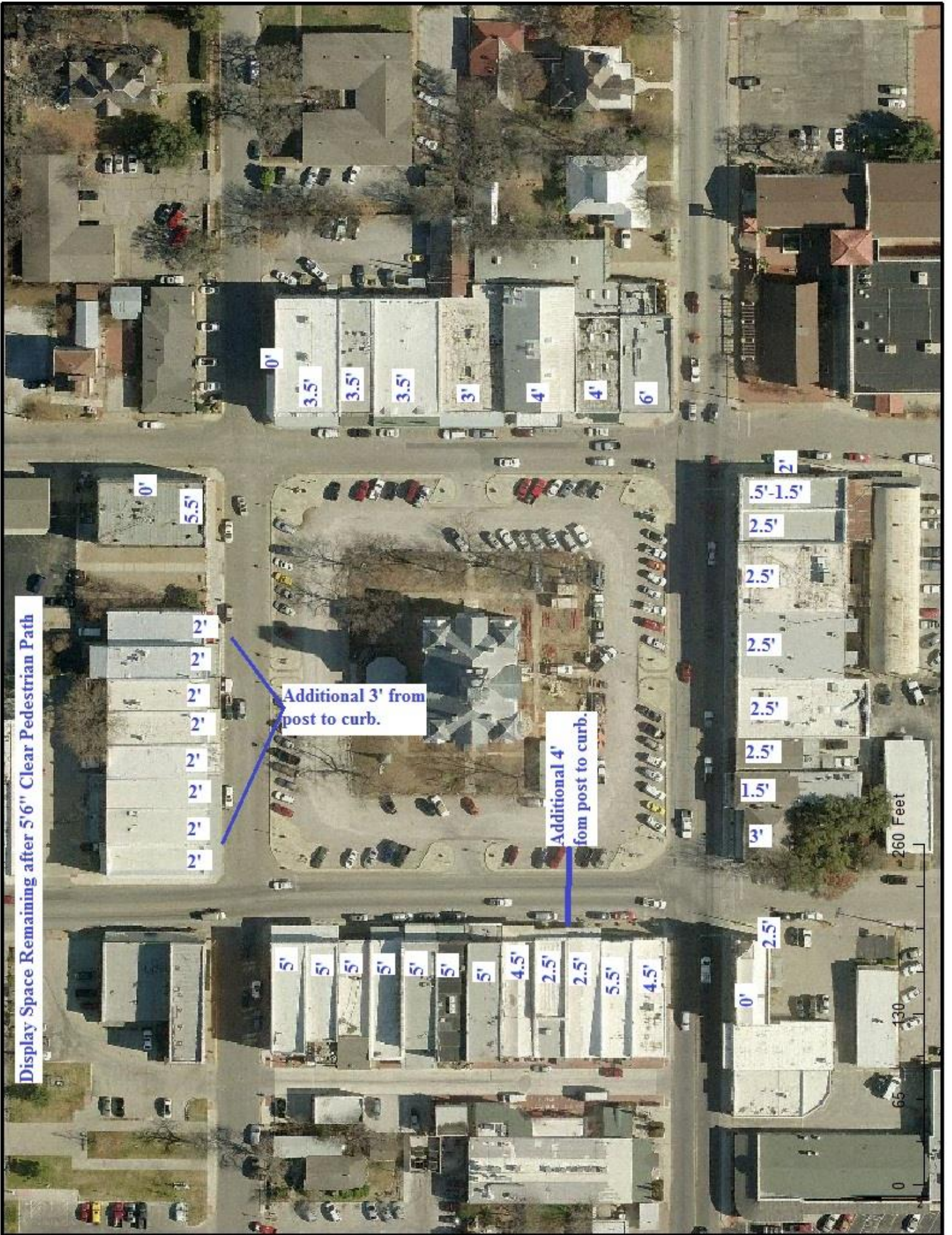
Staff Comments: Sandwich Board Signs, Merchandise display, planter pots or benches placed in areas inconsistent with the above conditions or in areas not shown on Square Sidewalk Map will require a Certificate of Appropriateness from the Historic Preservation Commission prior to placement along storefronts.

Also you may want to consider approving this COA for more than (1) year. It has been at least (3) years and there have not been any changes to the guidelines that staff recalls.

Attachments: Proposed C. of A. Requirements for Outdoor Display, Remaining Display Dimension Map

1. A 5'6" clear pedestrian pathway shall be provided along the storefront. The path must remain continuous and may not meander through the width of the storefront.
2. The pedestrian pathway may be reduced to 5' to allow for a pot or bench only when there is no merchandise display present along the storefront.
3. All merchandise display shall be located between the pedestrian pathway and the storefront. Merchandise display shall not be located between the pedestrian pathway and the street.
4. An 18" clear space shall be provided adjacent to any parallel parking. The area will be measured from the edge of the curb inward toward the storefront.
5. Sandwich Board Signs are permitted within the merchandise display area and are subject to requirements 1-4 above. Additionally, permitted sandwich board signs will meet the following criteria:
 - a. **Sign Material:** Any material. Painted sign frames must be painted with color from historic color palette.
 - b. **Size:** 4' maximum height.
 - c. **Maximum advertising area:** 6 sq. ft.
 - d. **Font Color:** Any font color is acceptable.
 - e. **Lighting:** Flashing lights or illumination of any kind is prohibited.
 - f. **Maximum number of sandwich board signs:** 1 sandwich board per storefront is allowed within the merchandise display area.
6. The Certificate of Appropriateness shall be issued for one (1) year. The Certificate of Appropriateness will be considered for renewal at the first meeting in January of each year by the Historic Preservation Commission.





Display Space Remaining after 5'6" Clear Pedestrian Path

Additional 3' from post to curb.

Additional 4' from post to curb.

0'

3.5'

3.5'

3.5'

3'

4'

4'

6'

0'

5.5'

2'

2'

2'

2'

2'

2'

2'

2'

2'

2'

5'-1.5'

2.5'

2.5'

2.5'

2.5'

2.5'

2.5'

1.5'

3'

260 Feet

5'

5'

5'

5'

5'

5'

5'

4.5'

2.5'

2.5'

5.5'

4.5'

2.5'

0'

130

65